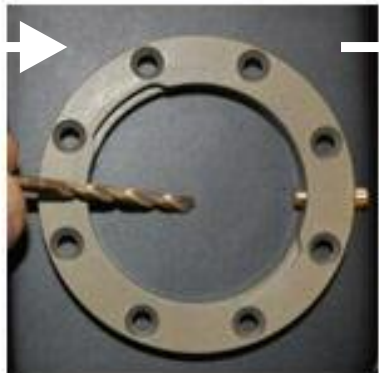
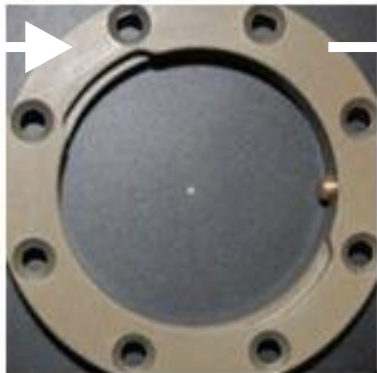


1  
Place the base ring exactly where you want to integrate the Zkulls™



Mark the center point

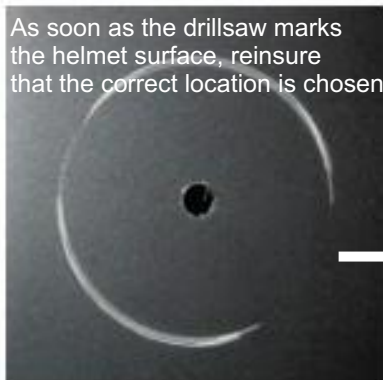


Drill a hole through center point.  
Use a drill 3,4 or 5mm



Drill with a 51mm drillsaw through the same point.

**Before installing the Zkulls™, make sure you take all the liner and other interior out of the helmet.**



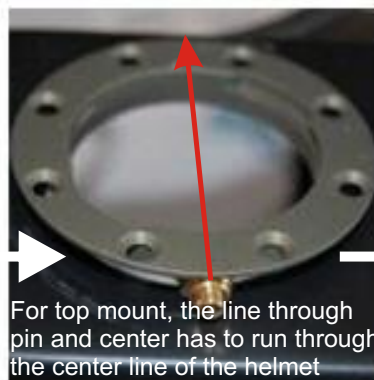
As soon as the drillsaw marks the helmet surface, reensure that the correct location is chosen



With the drillsaw continue until the round piece is cut through



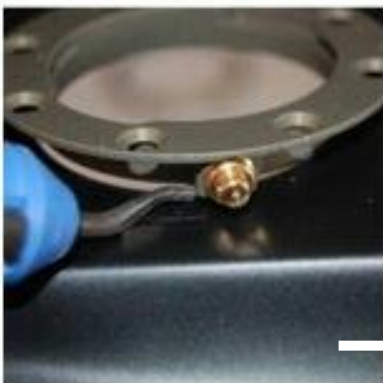
Place the Base Ring in the hole. Make sure that the *line drawn through the pin and the center points* towards your point of vision when you are filming



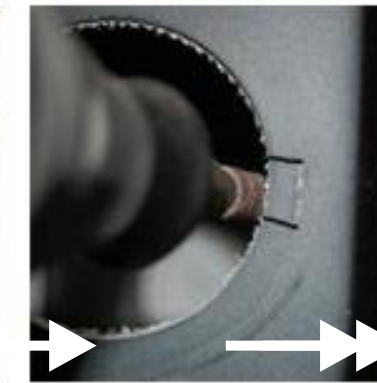
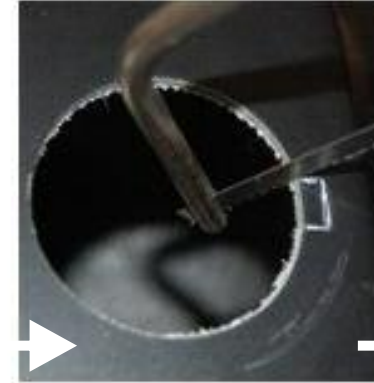
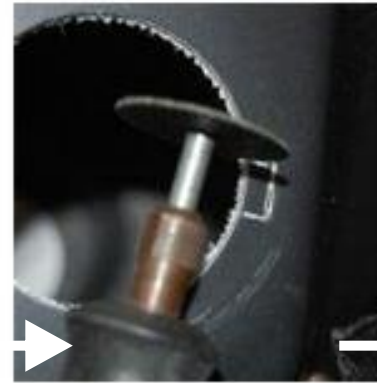
For top mount, the line through pin and center has to run through the center line of the helmet

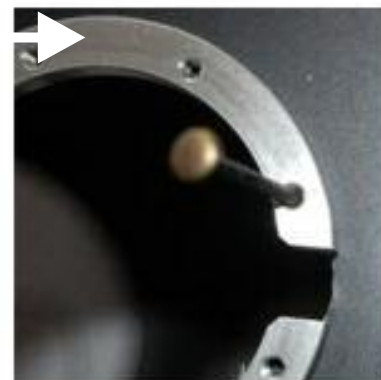
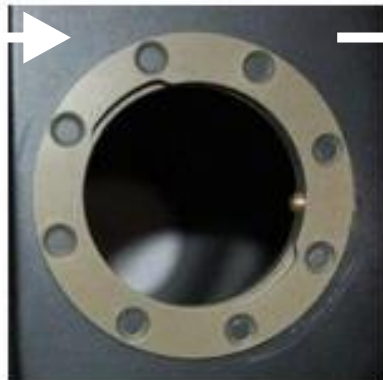
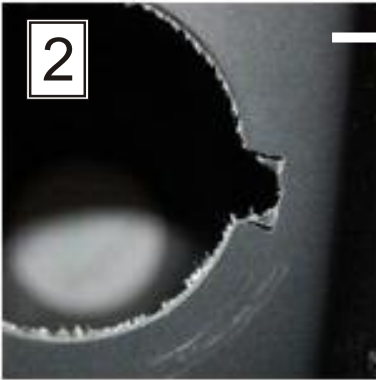


Mark the position of the pin with a sharp tool



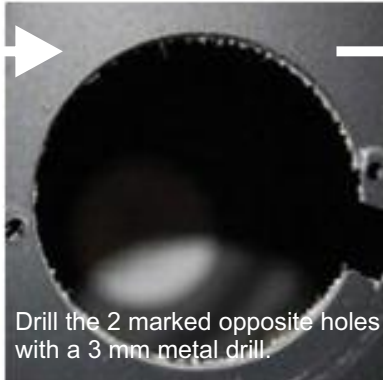
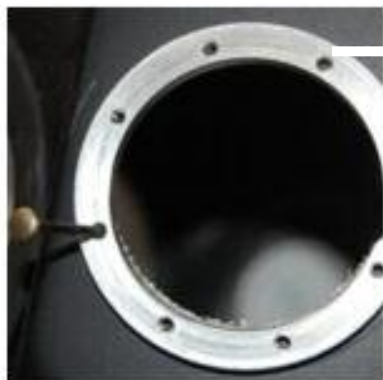
Cut the marked space with a "dremel" kind of tool, with a saw. Some examples:



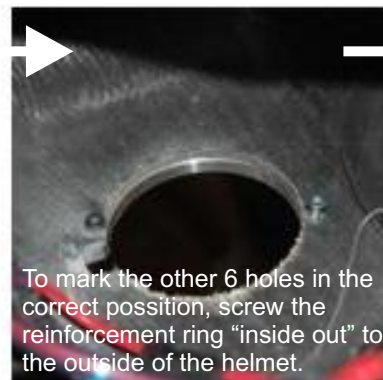


Place Zkulls™ Base Ring into hole and check for correct fit.

Remove Base Ring again and place reinforcement ring on the outside of the helmet. This helps to mark the exact positions for the 3mm screws. Mark only 2 opposite holes for the moment. Make sure you mark exact positions.



Drill the 2 marked opposite holes with a 3 mm metal drill.



To mark the other 6 holes in the correct position, screw the reinforcement ring "inside out" to the outside of the helmet.

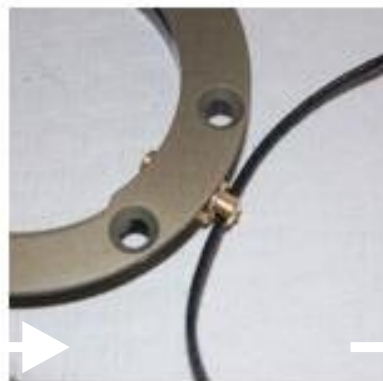
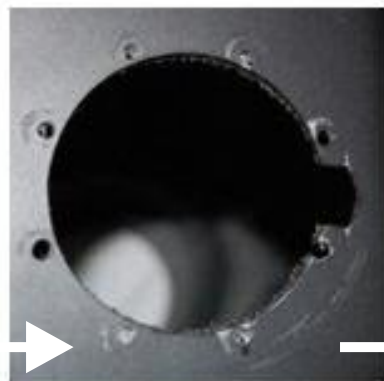
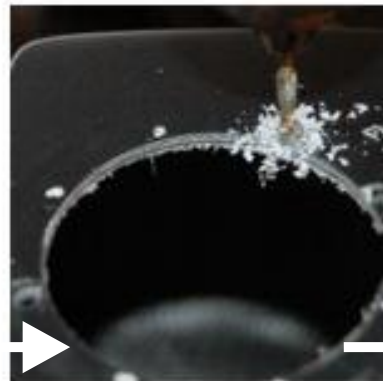
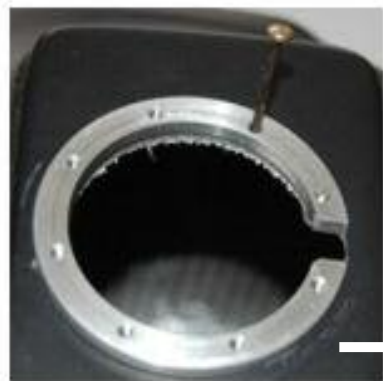


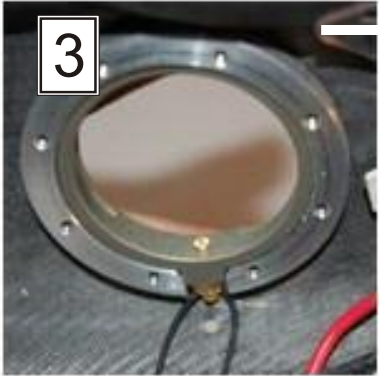
Mark the 6 holes through the holes in the reinforcement ring. Use a thin pointy tool (eg a nail).

Drill the 6 remaining holes exactly. Use the 3 mm drill.

Thread the string through the hole in the locking system.

Drill a 3 mm hole about 2 cm behind the pin position.

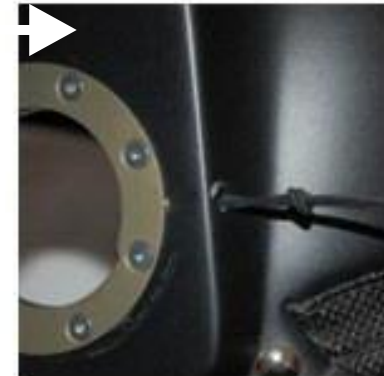




Insert the Base Ring and counter with the Reinforcement Ring from the inside of the helmet.



Carefully screw the 3mm aluminium screws through the holes in the Base Ring. Take turns tightening them.



Pull the 2 ends of the pull string through the hole behind the pin. Make a knot in the pull string.

Screw any Zkulls Bracket, Zkulls Base Plate or Zkulls Cage with the 4 delivered 4mm screws to the Insert of your TM system.